

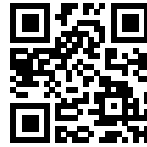


## Sink FM

Tank on the left

Kitchen Sinks

Code: 1971 062



### DETAILS

Edge/Installation Type	Standard (8 mm Edge)
------------------------	----------------------

Finish	Foster brushed
--------	----------------

Material	AISI 304 stainless steel
----------	--------------------------

Texture	Foster brushed
---------	----------------

Base	45 cm
------	-------

Dimensions	860x500 mm
------------	------------

Standard fittings	Fixing hooks, gasket, drain, overflow and siphon, boxed packing
-------------------	---

Mixer holes	1 standard hole - 2nd hole on request
-------------	---------------------------------------

Built-in hole	840 x 480 mm
---------------	--------------

Drainer	Yes
---------	-----

Width	86 cm
-------	-------

Bowl dimension	362,5x400mm
----------------	-------------

Number of bowls	1 bowl
-----------------	--------

Waste fitting	3,5" drain
---------------	------------

## FEATURES

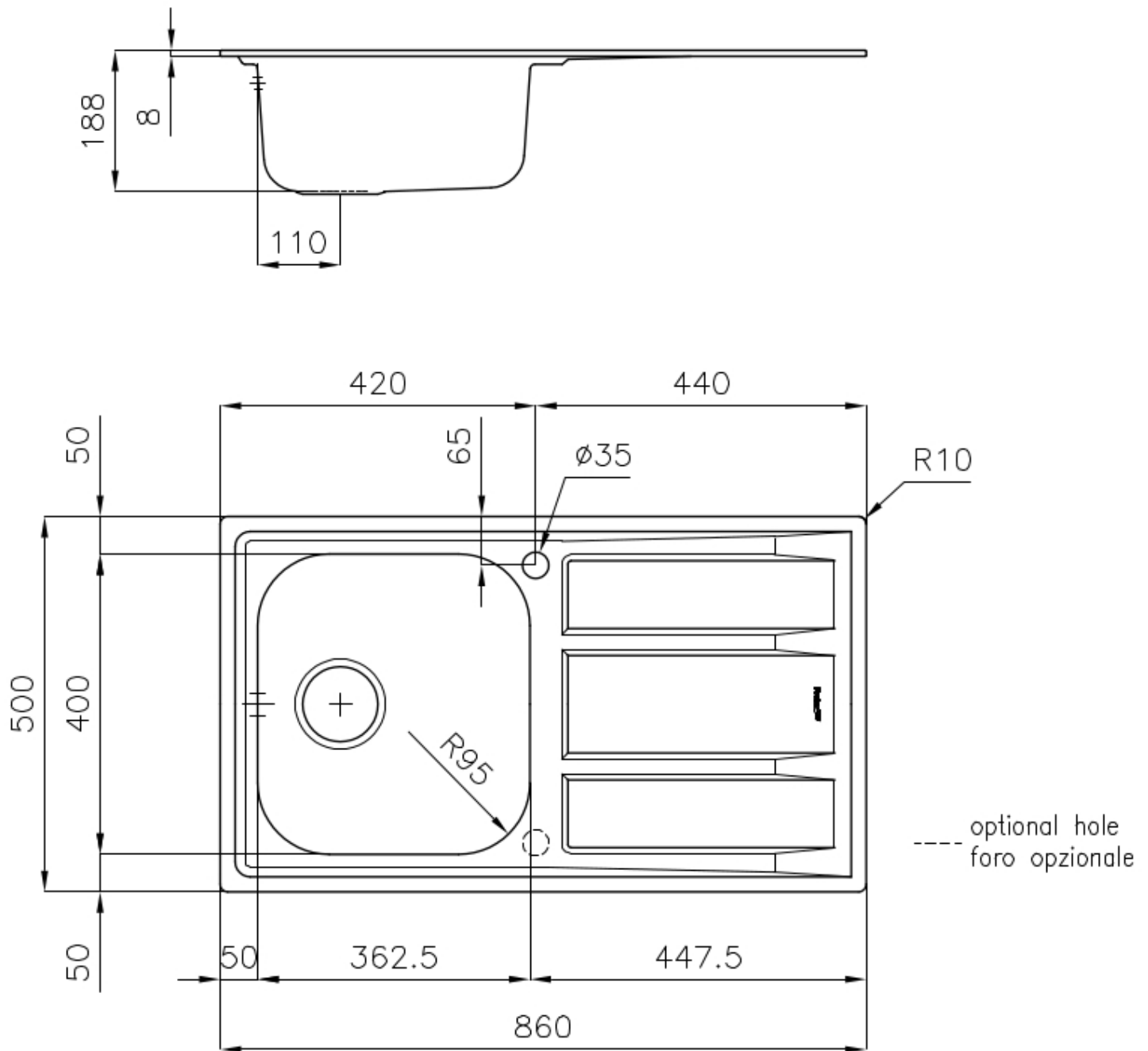
2nd / 3rd hole available	The sink can be customized with the execution on request of additional holes, usable for double-hole mixers, for remote controlled drains or for the installation of soap dispensers. The positions are marked on the drawings with dotted line holes.
--------------------------	--

Added value	Foster uses steel thicknesses higher than those used on average by other manufacturers. This is how, thanks to our long experience, we know how to make sinks of superior quality and with a better resistance to aging.
-------------	--

Basket 3,5" waste fitting	The drain is equipped with a large 3.5" drain, with the practical basket cap that prevents the discharge of solid parts.
---------------------------	--

Sliding brackets	
------------------	--

## TECHNICAL DATA



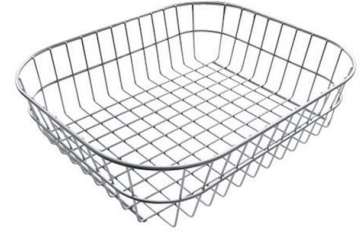
## OPTIONAL ACCESSORIES



**Glass chopping board**  
8631 300



**HDPE Chopping board**  
8657 001



**Stainless steel basket**  
8611 000

## RECOMMENDED PAIRINGS



**Miscelatore Gamma 3 vie - satinato**  
8496 100



**Mixer Tap Lorenzo**  
8466 000



**Mixer Tap NYC**  
8486 000

## OPTIONAL AUTOMATIC WASTE FITTINGS



**Automatic waste fitting**  
8407 100



**Automatic waste fitting**  
8407 000



**LIRA automatic waste fitting**  
8407 103